

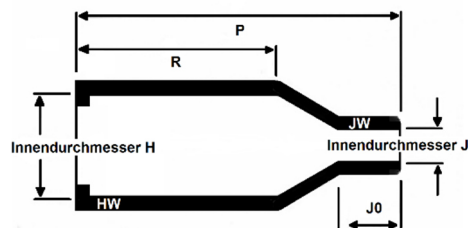
Moulded Parts 202K121 to 202K185 (straight, lipped, lightweight version)

These moulded parts or heat shrink boots INSTALITE are used for mechanical protection and cable strain relief. This version is ideal for cable harness applications where cable branches and breakouts are required. Our moulded parts combine an easy and quick installation with high electric strength, mechanical toughness and chemical and environmental resistance. These moulded parts are available with or without coating.

As supplied



After heating



Dimensions in mm

Injection and vent port available only on request

Part number	Inside diameter (coating reduces \varnothing max. 1.5mm)				P	R	Avg. weight saving	Wall thickness	
	As supplied		After heating					Tolerance +/- 10%	+/- 20%
	H	J	H	J				HW	JW
202K121-25L-0	24.00	24.00	10.40	5.60	38.00	21.00	20%	1.60	0.41
202K132-25L-0	30.00	30.00	14.20	5.90	55.00	32.00	20%	1.80	0.81
202K142-25L-0	31.00	31.00	18.00	7.10	67.00	35.00	20%	1.80	0.81
202K153-25L-0	36.00	36.00	22.40	8.40	80.00	42.00	23%	2.00	0.81
202K163-25L-0	43.00	43.00	28.20	9.90	99.00	61.00	28%	2.20	0.81
202K174-25L-0	60.00	60.00	35.10	15.70	130.00	72.00	22%	3.30	1.02
202K185-25L-0	66.00	66.00	44.50	16.80	170.00	90.00	21%	3.80	1.63

Material (not all combinations available)

Ordering Code	Material	Operating temperature range
-25L	Light weight polymer, fluid resistant	Please contact us

Coating, Adhesive

Ordering code	Material	Operating temperature range
/225	Epoxy/Polyamide	-75°C to +150°C

Colour

Ordering Code	Colour
-0	Black